



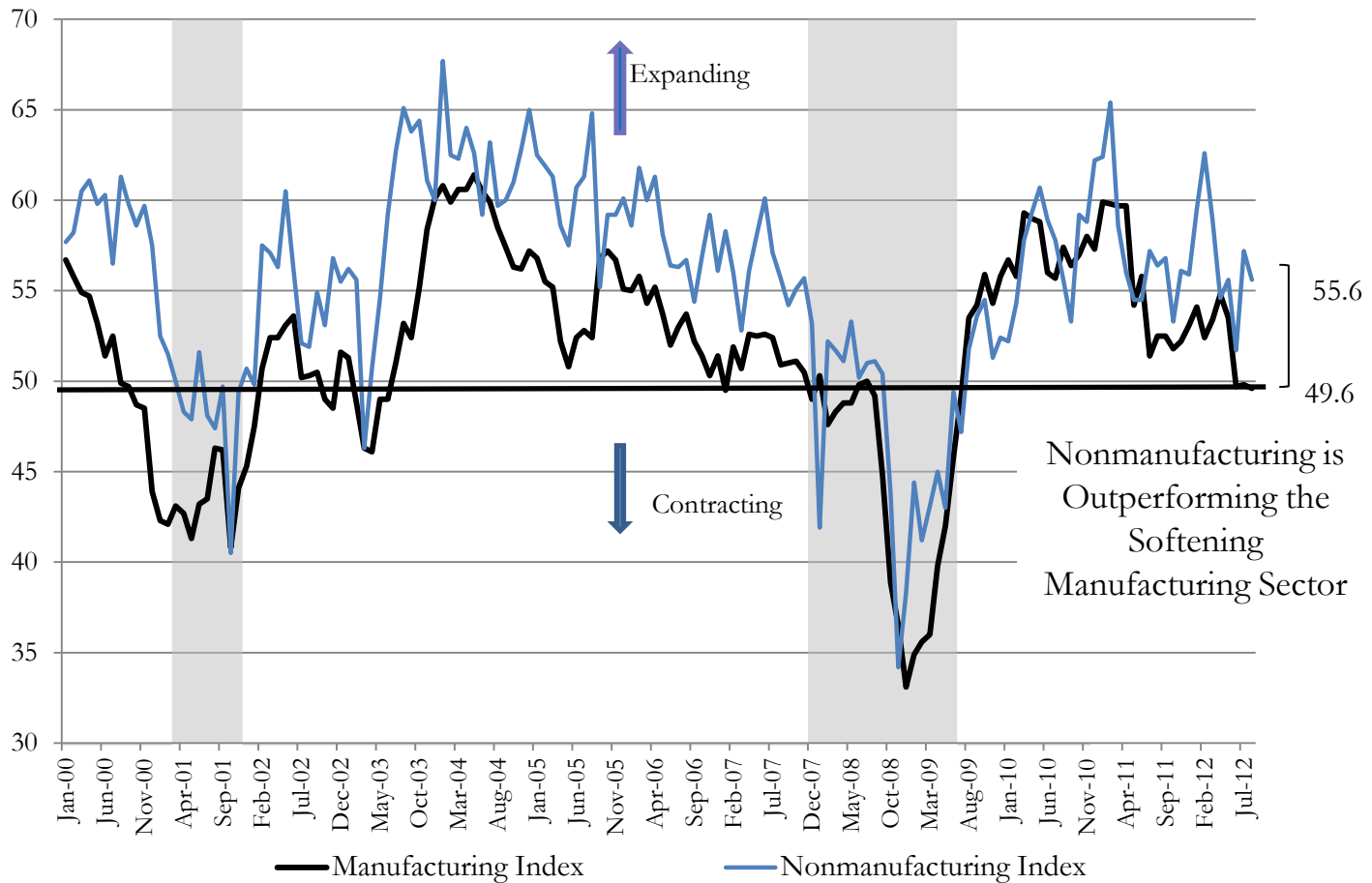
Perspective on Colorado's Budget and Economy

November 2012

Office of State Planning and Budgeting
Henry Sobanet, Director
Erick Scheminske, Deputy Director
www.colorado.gov/ospb

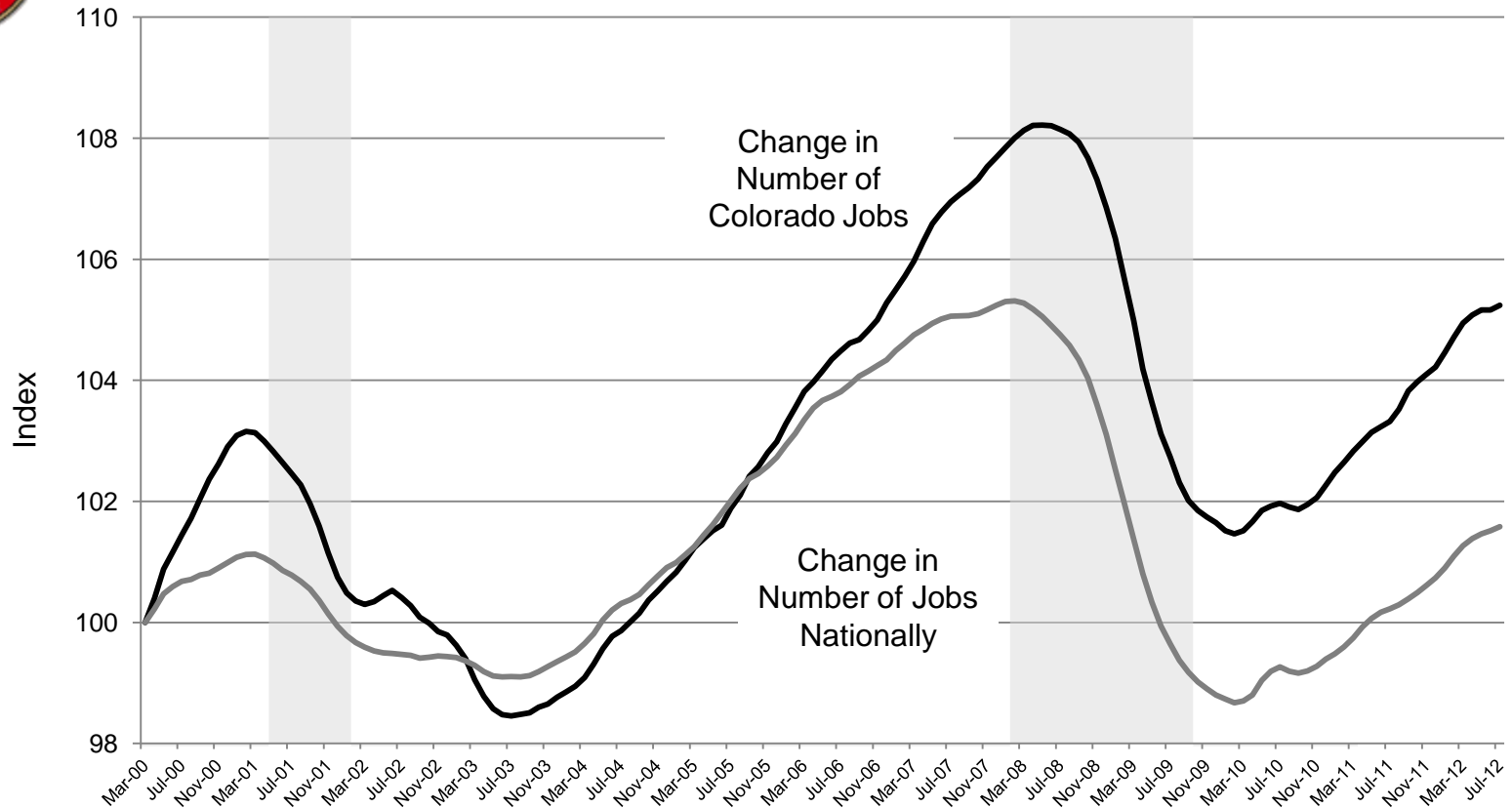


Comparison of Change in ISM Manufacturing and Nonmanufacturing Indices through August 2012





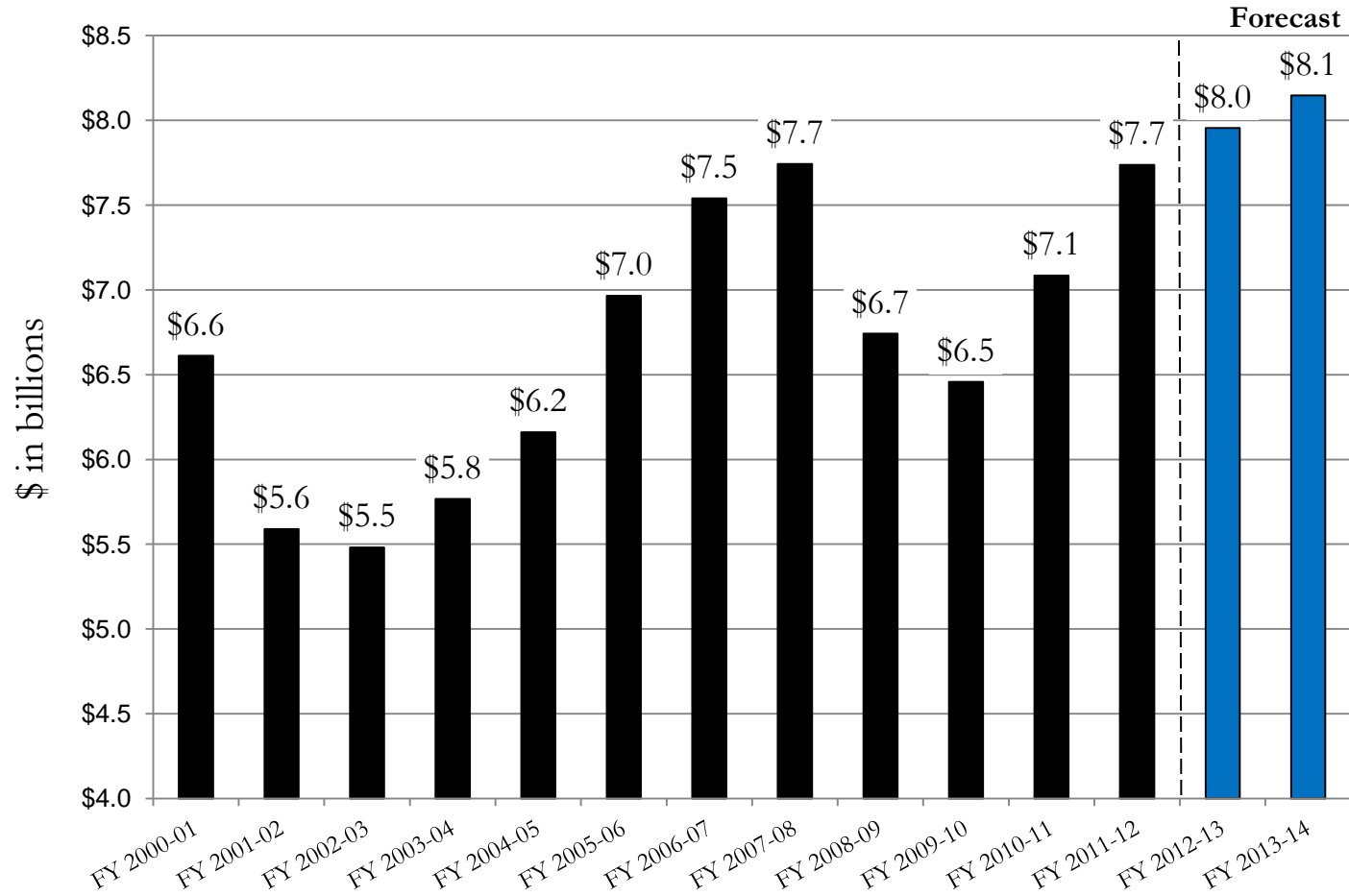
Change in Jobs Nationally and in Colorado (2000 to July 2012)



The graph compares the change in the number of jobs nationally and in Colorado since January of 2000. Index: March 2000=100
Source: U.S. Bureau of Labor Statistics. The Colorado jobs level includes OSPB's estimates of forthcoming revisions to jobs data that are currently not published. The jobs figures will be benchmarked based on Quarterly Census of Employment and Wage data to more accurately reflect the number of jobs in the state than what was estimated based on a survey of employers.



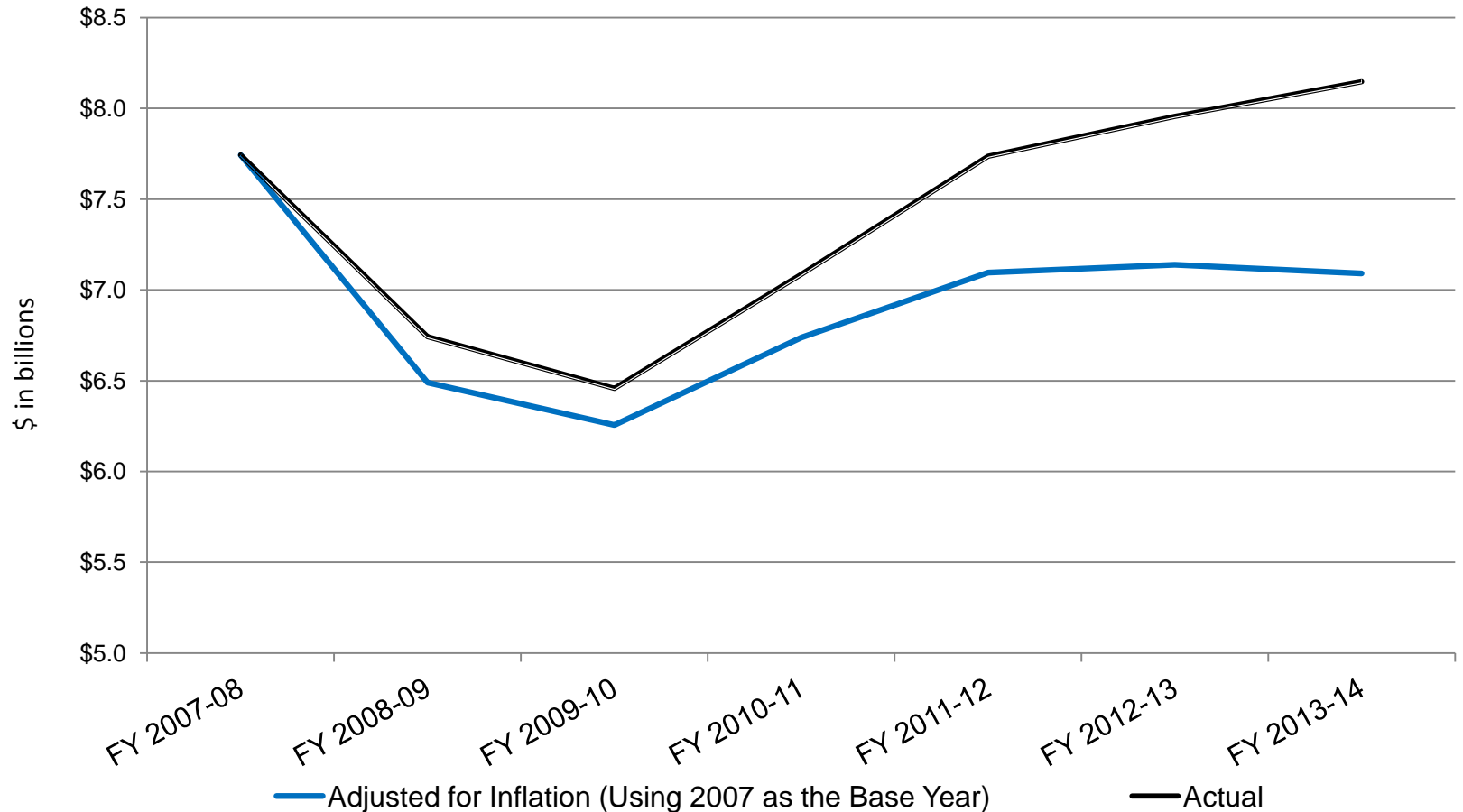
State General Fund Revenue, FY 2000-01 to FY 2013-14 Actual and Forecast





General Fund Revenue, FY 2007-08 to FY 2013-14

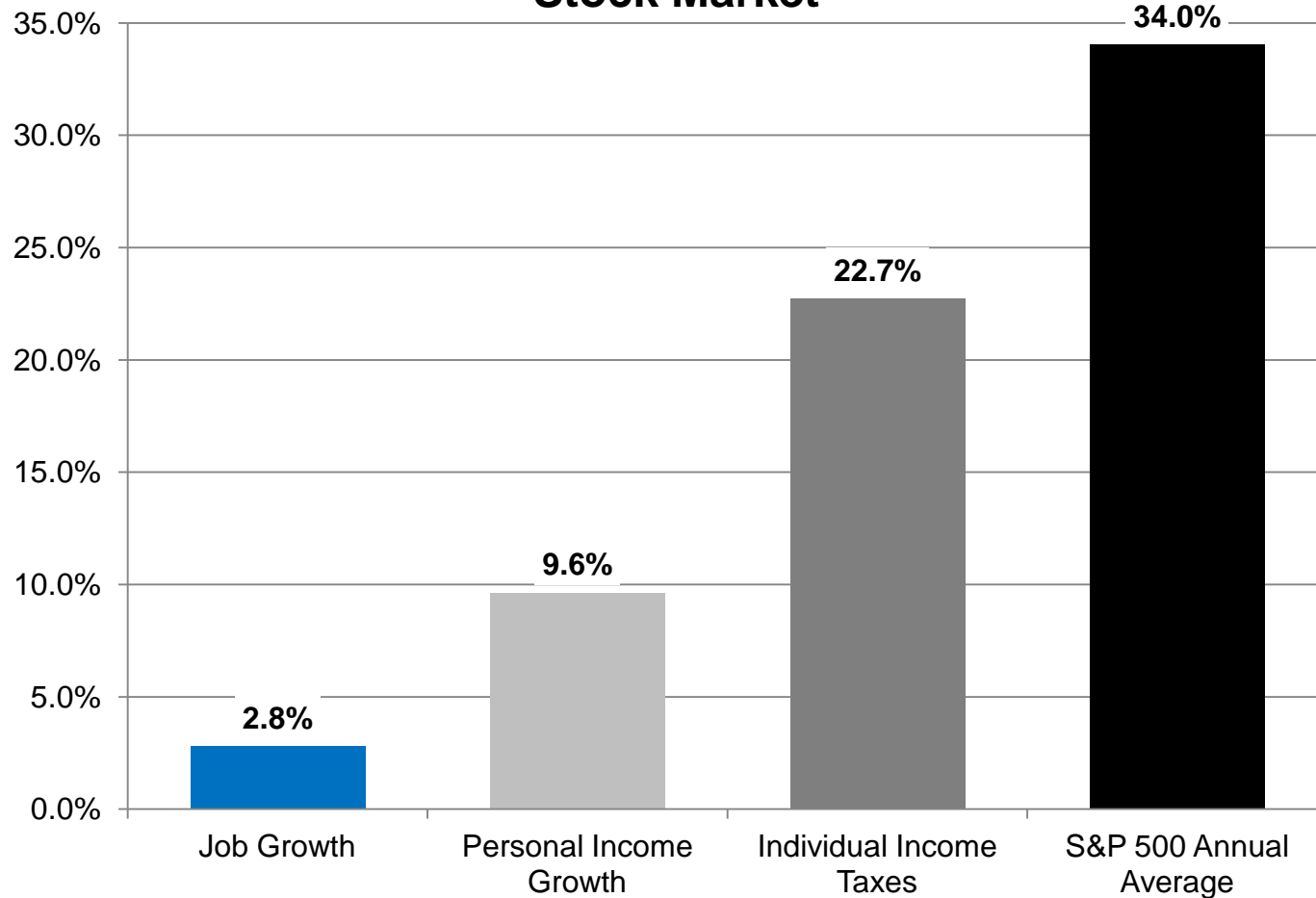
Actual and Adjusted for Population and Inflation



Source: Office of State Planning and Budgeting, September 2012 Forecast

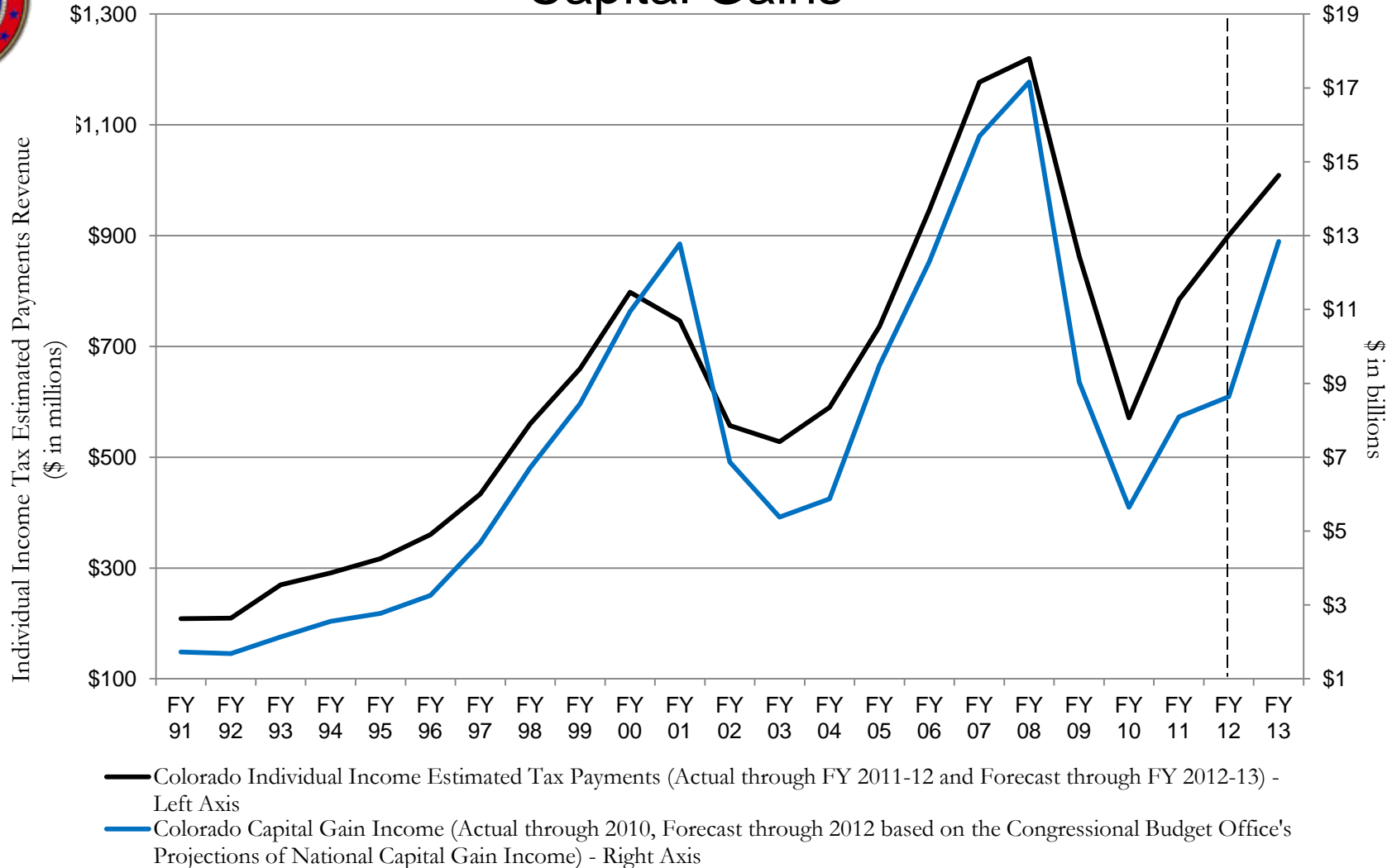


% Change, FY 2009-10 to FY 2011-12 in Jobs, Personal Income, Income Tax Revenue, and Stock Market





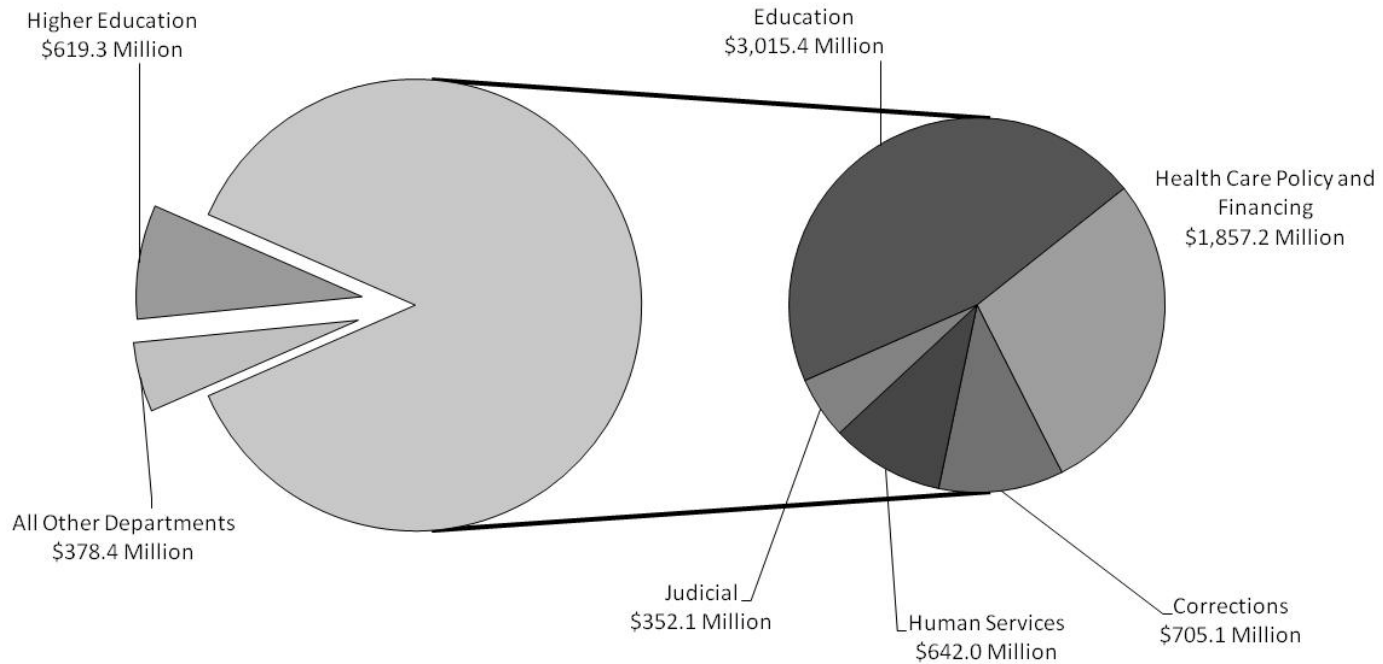
Estimated Income Tax Payments and Colorado Capital Gains





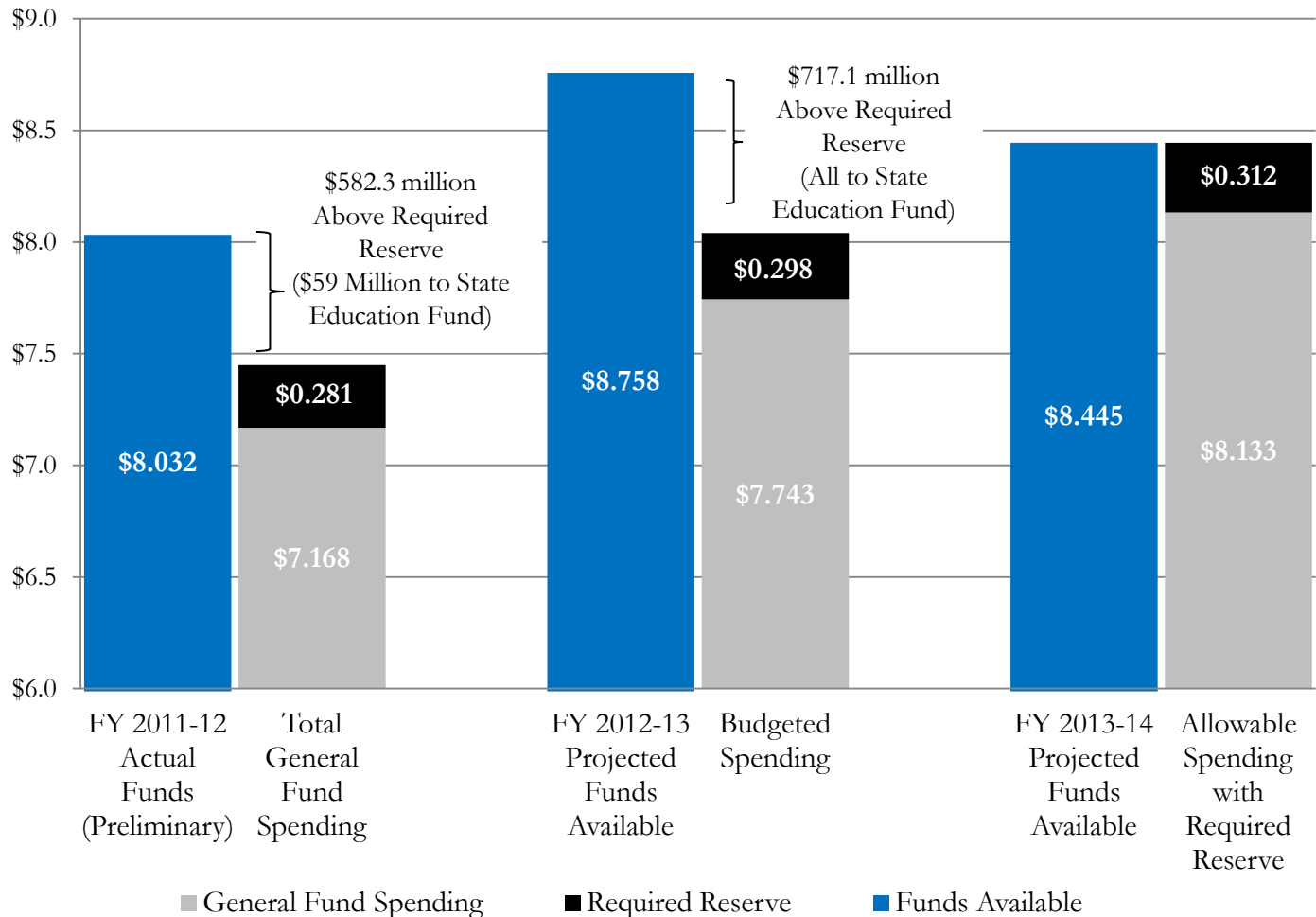
FY 2012-13 General Fund Appropriations

FY 2012-13
General Fund Appropriations
\$7,569.5 Million





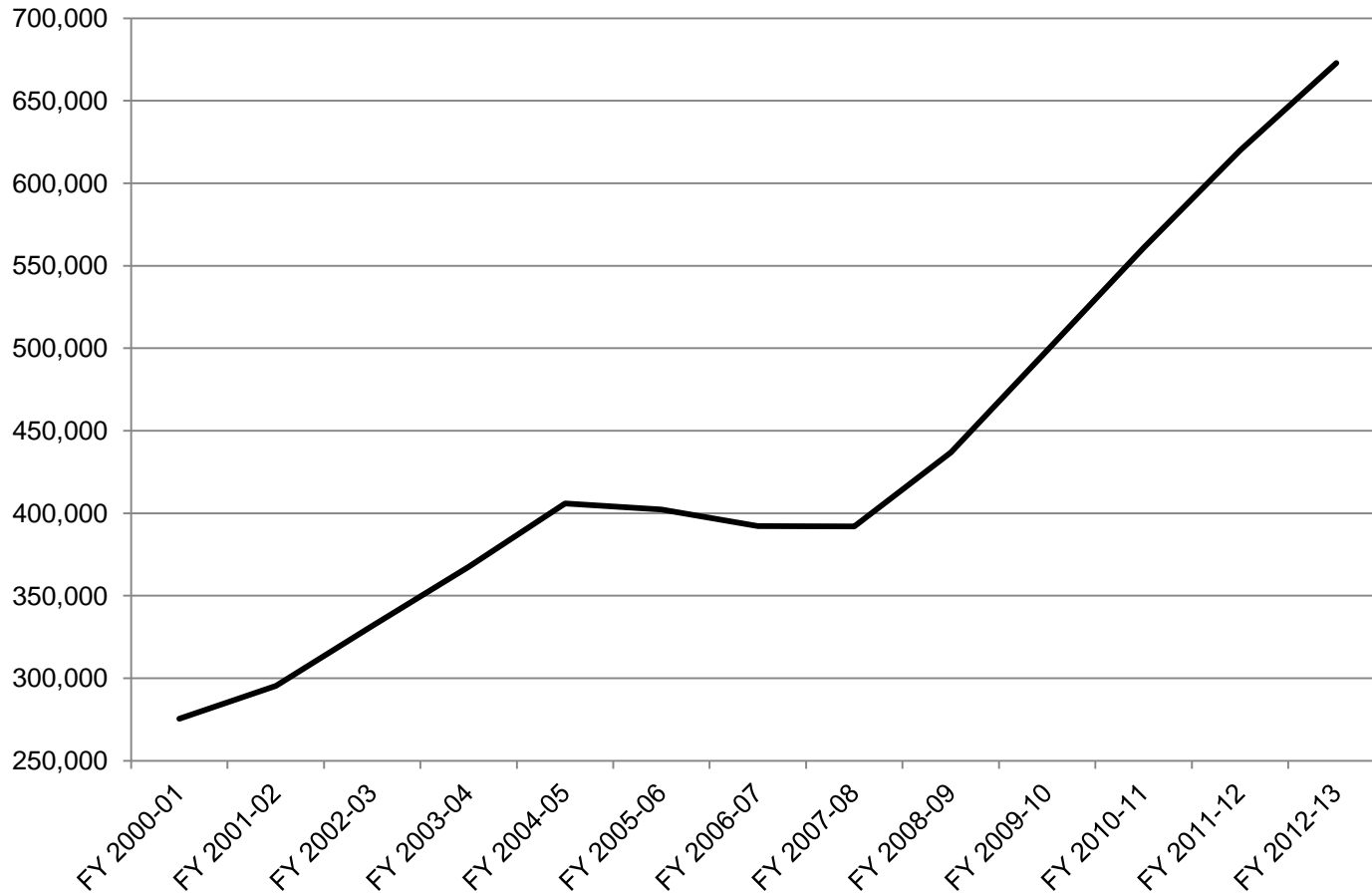
General Fund Money, Spending, and Reserves, FY 2011-12 through FY 2013-14 (\$ in Billions)





Medicaid Enrollment Growth

Projected Increase of 144% from FY 2000-01 to FY 2012-13





Governor Hickenlooper's FY 2013-14 Budget Request

The November 1, 2012 budget request includes targeted increases in several critical areas:

- Fully funding K-12 education at a rate that exceeds inflation plus enrollment
- Protecting the Last and the Least in Colorado
 - Additional services to 809 people with developmental disabilities
 - Additional early intervention services for children from birth to two years
 - Increase funding for Older Coloradans Act and Elder Abuse Task Force
- Enhancing public safety
 - Expanded mental health services for crisis response and community center capacity



Governor Hickenlooper's FY 2013-14 Budget Request

The November 1, 2012 budget request includes targeted increases in several critical areas:

- Growing support for institutions of Higher Education
- Enhancing economic development efforts
 - New resources for film incentive rebates and loan guarantees
 - Expanded tax incentive funding for job creators in Colorado
 - Funding for tourism advertisement and Colorado branding efforts
- Investing in our infrastructure and local communities
 - Ongoing COP payments and extensive controlled maintenance on State-owned buildings
 - Average 3.% pay increase for State employees (COLA and Merit Pay)
- Saving for the future
 - Expanding the required General Fund reserve from 4% to 5%
 - Growing the balance in the Controlled Maintenance Trust Fund



Governor Hickenlooper's FY 2013-14 Budget Request

Table 1: Total Funds (by major category)

	FY 2012-13 Total Funds	FY 2013-14 Total Funds	FY 2013-14 Change	FY 2013-14 % Change
Health Care Policy and Financing	\$5,561,158,114	\$6,036,722,041	\$475,563,927	8.6%
K-12 Education	4,421,710,962	4,634,730,118	213,019,156	4.8%
Higher Education	3,033,991,124	3,102,280,175	68,289,051	2.3%
Human Services	2,071,322,439	2,121,783,957	50,461,518	2.4%
Transportation	1,119,353,686	1,267,760,876	148,407,190	13.3%
Corrections	737,580,936	742,698,794	5,117,858	0.7%
Other Departments	<u>3,624,516,290</u>	<u>3,722,359,309</u>	<u>97,843,019</u>	<u>2.7%</u>
			1,058,701,71	
Subtotal Department budgets	20,569,633,551	21,628,335,270	9	5.1%
Controlled Maintenance Trust				
Fund	13,000,000	23,097,266	10,097,266	77.7%
Other Adjustments	628,687	15,712,476	15,083,789	N/A
Other GF				
Obligations/Expenditures	<u>173,483,361</u>	<u>209,100,446</u>	<u>35,617,085</u>	<u>20.5%</u>
			1,119,499,85	
Total	20,756,745,599	21,876,245,458	9	5.4%



Governor Hickenlooper's FY 2013-14 Budget Request

Table 2: General Fund (by major category)

	FY 2012-13 Total GF	FY 2013-14 Total GF	FY 2013-14 Change	FY 2013-14 % Change
K-12 Education	\$3,015,437,087	\$3,016,915,356	\$1,478,269	0.0%
Health Care Policy and Financing	1,857,115,475	2,031,840,027	174,724,552	9.4%
Corrections	651,332,037	655,570,996	4,238,959	0.7%
Higher Education	619,261,908	656,729,783	37,467,875	6.1%
Human Services	642,011,487	680,113,157	38,101,670	5.9%
Other Departments	<u>771,304,068</u>	<u>841,468,700</u>	<u>70,164,632</u>	<u>9.1%</u>
Subtotal Department budgets	7,556,462,062	7,882,638,019	326,175,957	4.3%
Controlled Maintenance Trust Fund	13,000,000	23,097,266	10,097,266	77.7%
Other Adjustments	628,687	15,712,476	15,083,789	N/A
Other GF Obligations/Expenditures	<u>173,483,361</u>	<u>209,100,446</u>	<u>35,617,085</u>	<u>20.5%</u>
Total	7,743,574,110	8,130,548,207	386,974,097	5.0%