

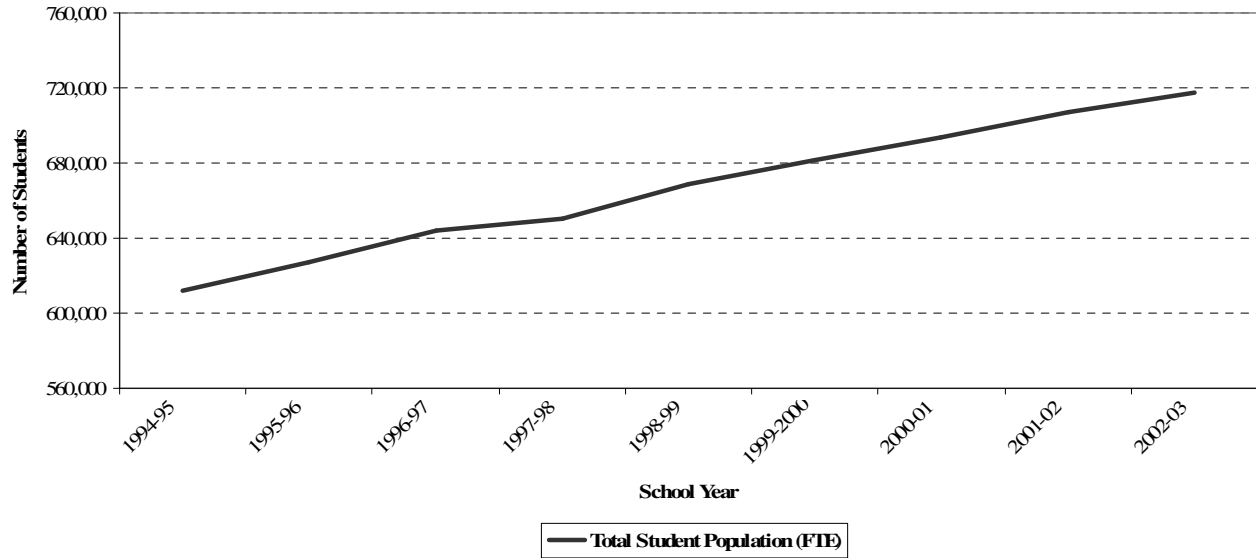
Colorado School Finance Project

1200 Grant Street

Denver, CO 80203

303-860-9136 Fax 303-832-1086 www.cosfp.org

Total Enrollment (FTE), 1994-2003



Between the 1994-1995 and 2002-2003 school years, the number of students enrolled in Colorado's public schools increased by over 100,000 or by greater than 17%.

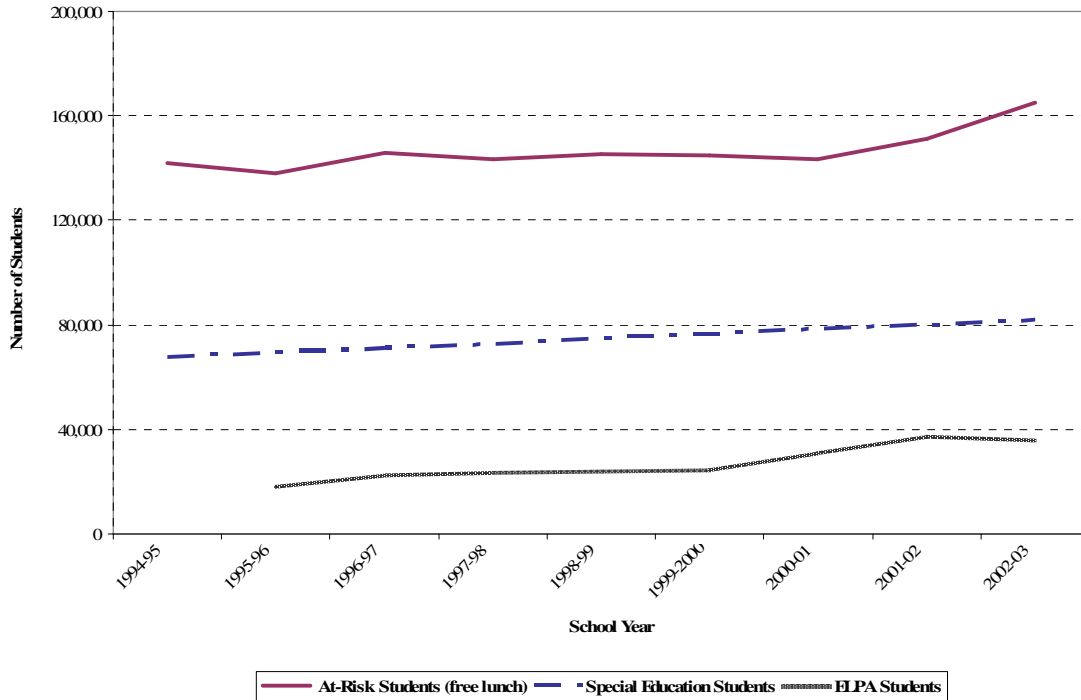
Colorado School Finance Project

1200 Grant Street

Denver, CO 80203

303-860-9136 Fax 303-832-1086 www.cosfp.org

Enrollment of special student populations



The percentage of students who are part of special needs populations has remained relatively constant over the last ten years:

- Special Education students, 11%--11.4% of the total population. This reflects a growth from about 67,000 students to almost 82,000 students.
- At-Risk students (free lunch), 20.7%--23.2% of the total population. This reflects a growth from about 142,000 students to almost 165,000 students.
- ELPA students, 2.8%--5.2% of the population. In the 1995-96 school year, this group comprised almost 18,000 students. By the 2002-03 school year, this had grown to over 35,000 students.

However, as the overall student population grows, so do the number of students requiring special services.